

VILLA

SUP PARCELA:	210,41 m ²	08
ESPACIO LIBRE:	117,34 m ²	
PISCINA:	-- m ²	

SUPERFICIES

PL BAJA

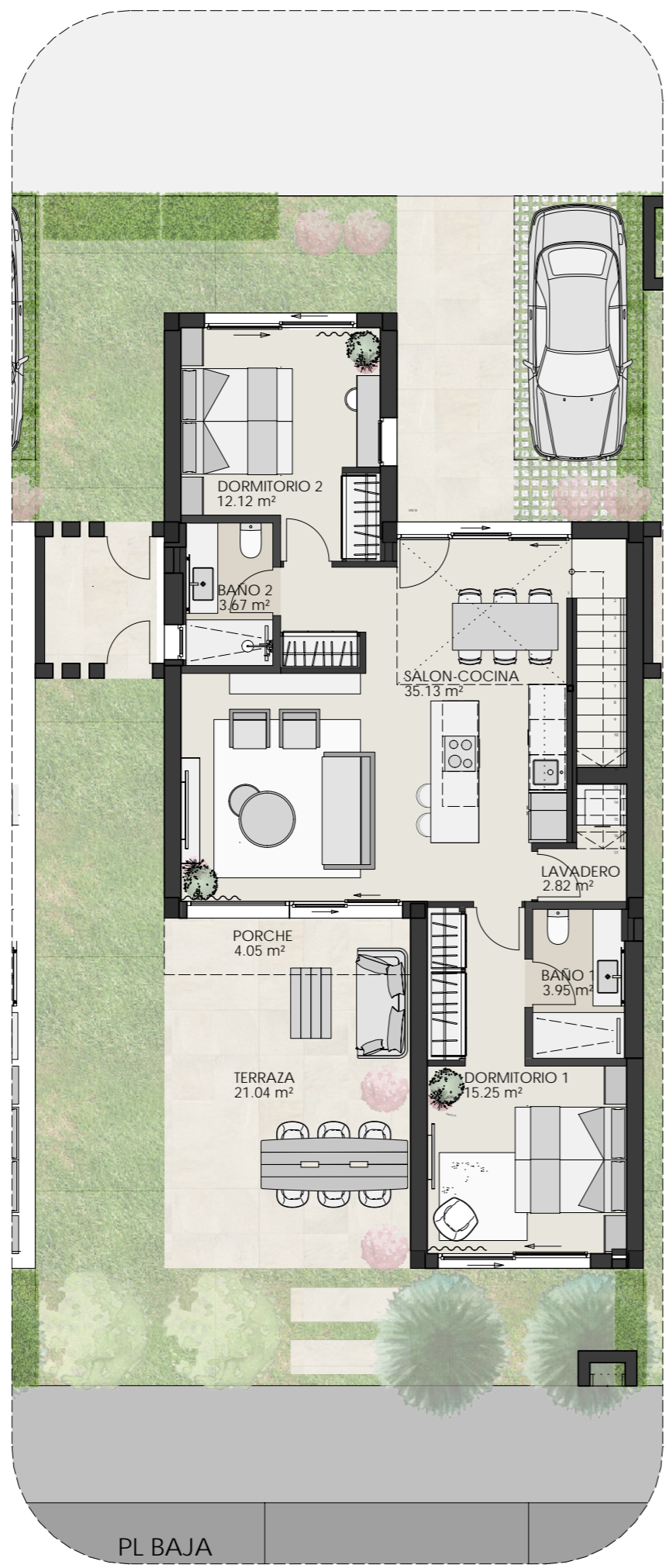
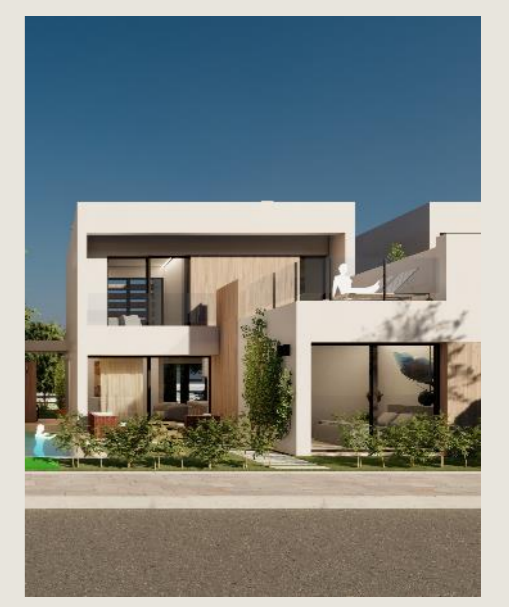
Construida:	91,08 m ²
Terrazas+Porches:	25,09 m ²

PL 1

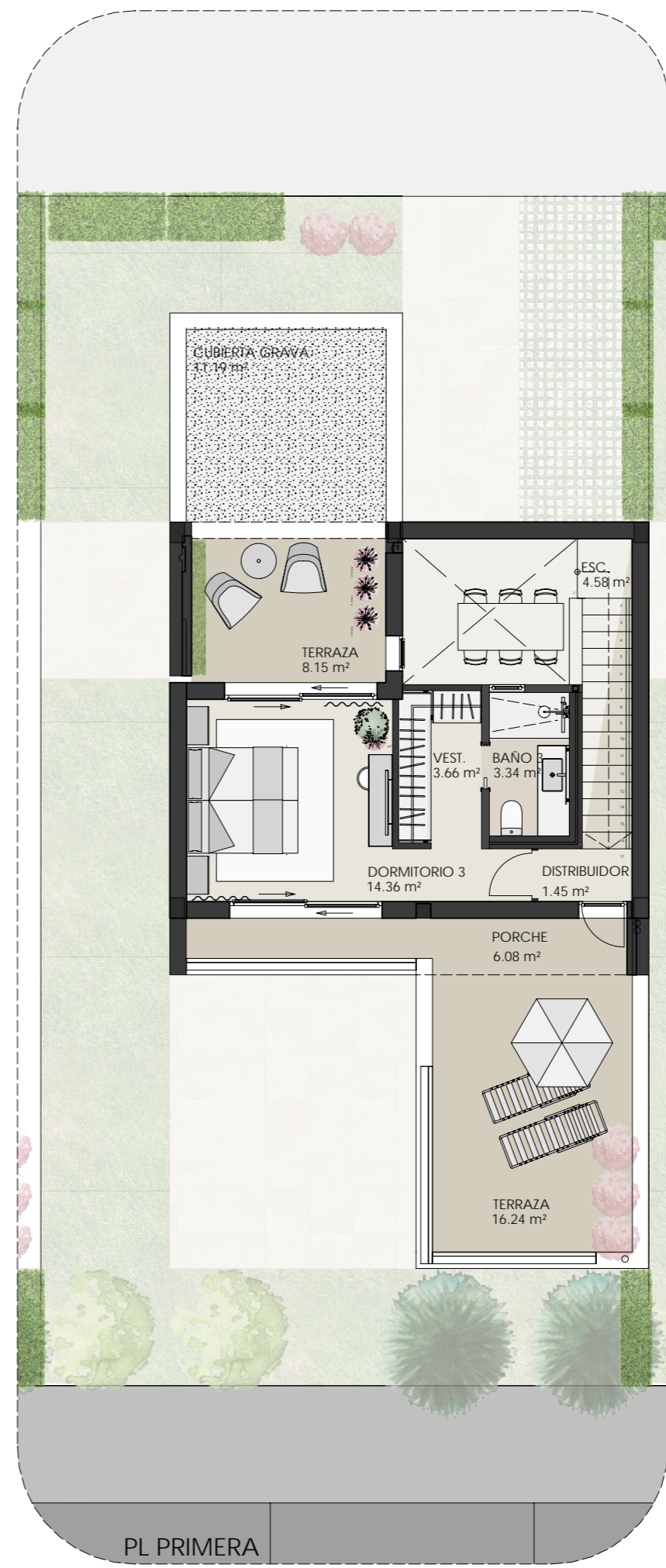
Construida:	31,12 m ²
Terrazas+Porches:	30,69 m ²

TOTAL

Construida:	122,20 m ²
Terrazas+Porches:	55,78 m ²



PL BAJA



PL PRIMERA

